



EM² ENGINEERING GROUP

COMPANY PROFILE

ELECTRO-MECHANICAL CONTRACTORS



TABLE OF CONTENT

- Our Mission, Vision & Values
- Our History
- Our Services
- List of Projects

OUR MISSION

To provide our clients with superior engineering services while attaining operational excellence throughout the project lifecycle. We establish our collaborations with a dedication to producing high-quality outcomes in a way that is secure, long-lasting, and economical. We also aim to create a long-lasting, sustainable connection with both our clients and suppliers.

A tall, white lighthouse with a red lantern room is illuminated from within, casting a warm glow. A beam of light from the lantern room illuminates the large, white, stylized letters 'EM2' in the foreground. The background is a dark, starry night sky. The lighthouse is situated on a dark, silhouetted hillside.

OUR VISION

Our vision is to become the best and most respected electro-mechanical contracting company in the region and later expand our horizons and become worldwide service providers.

OUR VALUES

Our internal processes and interactions with our partners are guided by our core values.

QUALITY

We are proud of the bonds we have cultivated and established with our customers. We have been committed to providing our clients with the highest quality services since the start, and this is all thanks to our ongoing investments in the talent and knowledge of our staff.

INTEGRITY AND TRUST

Integrity serves as the foundation for all of our long-standing relationships with our customers and partners. This is why we are always committed to being trustworthy, moral, and ethical.

SAFETY

Safety represents our sincere concern for the well-being of our people, who we consider our most valuable resource. As we embrace and put into practice the highest quality, health, and safety standards, we create an atmosphere free of injuries and incidents.

RESPECT FOR PEOPLE

We value diversity and inclusion and treat both our clients and workers with utter respect. We believe in the power of multiculturalism, and the changes it could bring to the world.

ABOUT US

EM² is a leading electro-mechanical, contracting, and maintenance company. We work in the construction engineering sector in Lebanon and provide solutions and services across a range of industries, including but not limited to mechanical, electrical, and communications engineering. We are experts in carrying out electrical work for a wide variety of construction projects, including small homes and flats as well as schools, universities, shopping malls, office buildings, government structures, hospitals, hotels, and so on. Our whole workforce, from the managing director to the site forepersons, is dedicated to offering our clients affordable quality installations and programs.





OUR HISTORY

EM² Engineering Group was established 15 years ago. With a team of more than 5 ambitious and hardworking engineers whose meticulous attention to detail and unwavering commitment to quality have been the continuous pillars of our success. Over the years, we have established a solid name among a sizable clientele that includes businesses in the commercial, industrial, conservation, leisure, and residential sectors, constantly learning from these experiences to better serve our present and future clients. We have also developed trust-based partnerships, which have progressively become a part of our portfolio.

OUR SERVICES

EM² undertakes all aspects of commercial, public, and industrial building services installations. This includes electrical, fire protection, commissioning, and testing for both predesigned and design-and-build projects. Our services include:

- Lighting and power installations
- Fire detection and alarm systems
- Street lighting systems
- Access control systems
- Music systems
- CCTV systems
- Intrusion systems
- BMS
- HVAC systems
- Firefighting systems
- Plumbing systems
- Maintenance
- Solar system



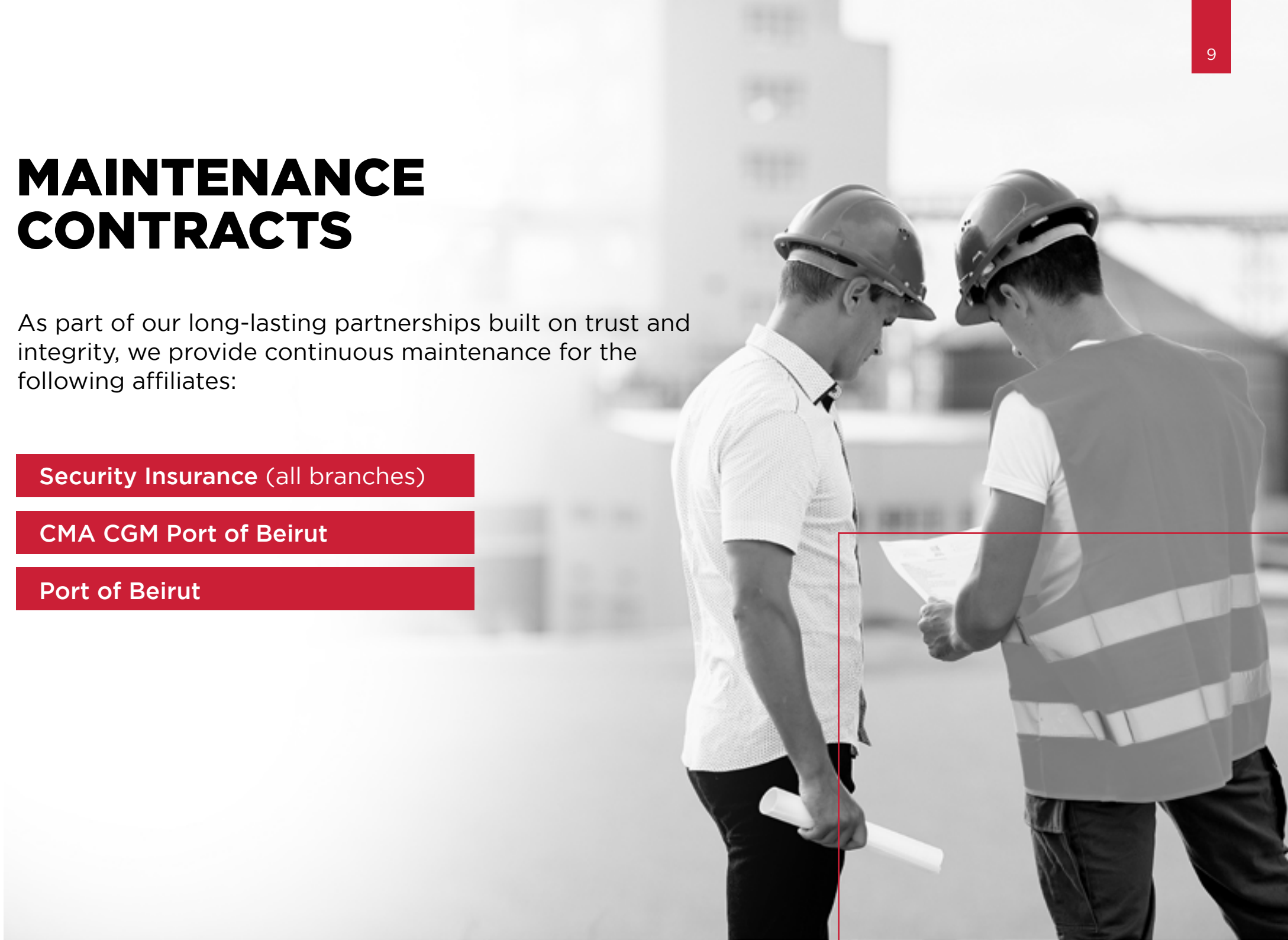
MAINTENANCE CONTRACTS

As part of our long-lasting partnerships built on trust and integrity, we provide continuous maintenance for the following affiliates:

Security Insurance (all branches)

CMA CGM Port of Beirut

Port of Beirut



LIST OF PROJECTS

- Spinneys Jounieh
- Spinneys Zouk
- Gmrl Offices
- Happy Dekweneh
- Villa z Ajaltoun
- Villa b Baisariye
- Mr Zakhia Issa app Pasteur Achrafiye
- Hsoun XXL Factory
- Happy HADAT
- Haya Hotel Tabarja (Mr. Andre AZZI) (13000m²)
- Al Jazeera Offices and Studio (Stratum Building)
- Chez Laura project (7 Residential Buildings)
(ZEG Contractors)
- Harika Medical Center Baabda
- Divvy Broumana-ABC Ashrafiye
- Metlife Offices Zalka (ZEG Contractors)
- Noura Zalka Branch (Solid Group)
- Halat sur Mer new sections 20 Chalets & Garages
- Developer Murr Group, total area 2000m²
- I-Supply Factory Amchit (10000m²)
- Securite Insurance Offices Sin El Fil (1500m²)
- ZWZ Jeita (KEG Contractors)
- G2000 Boutique, Solidere (KEG Contractors)
- Guess Boutique, Solidere(KEG Contractors)
- Esprit Boutique, Solidere (KEG Contractors)
- Damac Show Room, Solidere (KEG Contractors)
- Damac Show Flat, Solidere (KEG Contractors)
- Maghrabi Optical BCC (KEG Contractors)
- Beyond Optical BCC (KEG Contractors)
- Early Learning Center BCC (KEG Contractors)
- Betty Barclay BCC (Michel Keyrouz Contractors)
- Creapaway BCC (KEG Contractors)
- Scoozi BCC (KEG Contractors)
- Nasma BCC (KEG Contractors)
- BBAC Kousba El Koura (Pierre Dammous consultant)
- BIG FUN, Mansouriye, total area 500m²
(Michel Keyrouz Contracors)
- Diplomatic Club, Byblos 17000m² project
(Owner: Eng. Jean Louis Kordahi) (Design)
- Defecto Zahle, total area 1200m²
- Mr Riad Bakhach, Villa Baabdat
- Mr. Roland Nohra, Villa Hakel
- Solar plot 11 (400 kw - on grid system)
- Solar dbayeh - amaneh aameh (200 kw - hybrid system)

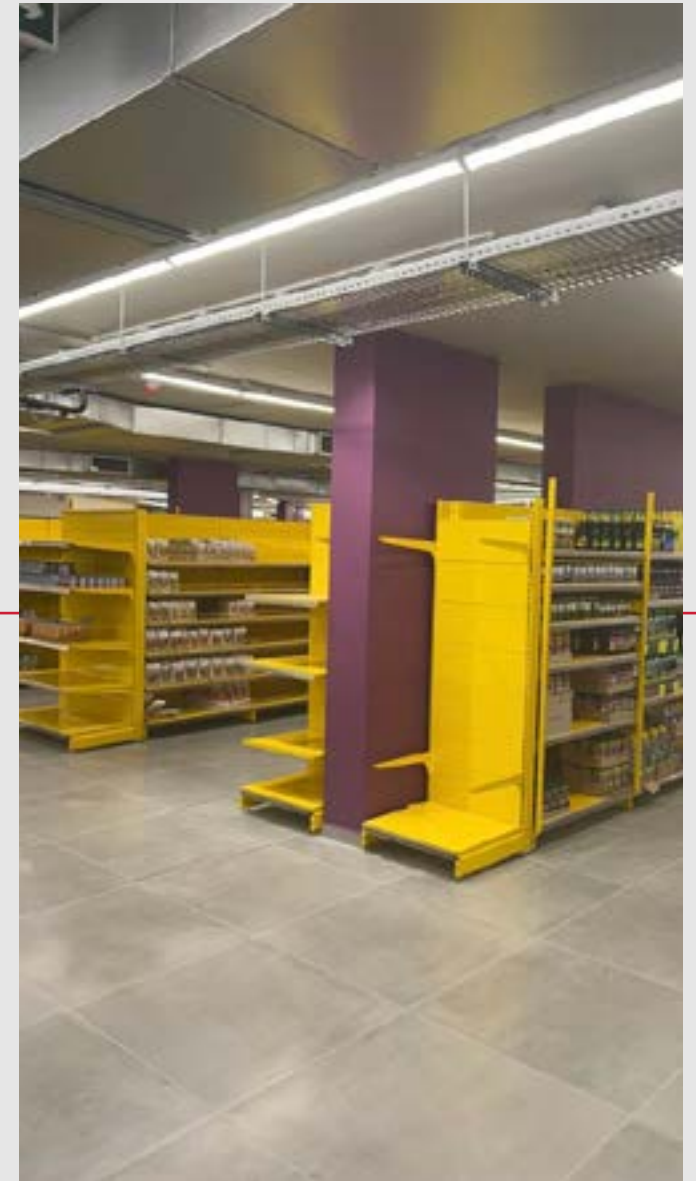
HSOUN XXL FACTORY



MR. JIHAD LAKKIS APARTMENT (CARELTON RAWCHE)







SECURITE INSURANCE





CONTACT US:

EM² Engineering Group SAL

info@em2lb.com

T + 961 9 545549

M +961 3 359296